

# PRODUCT INFO SHEET

Nanmac Corporation

Quality • Performance • Solutions

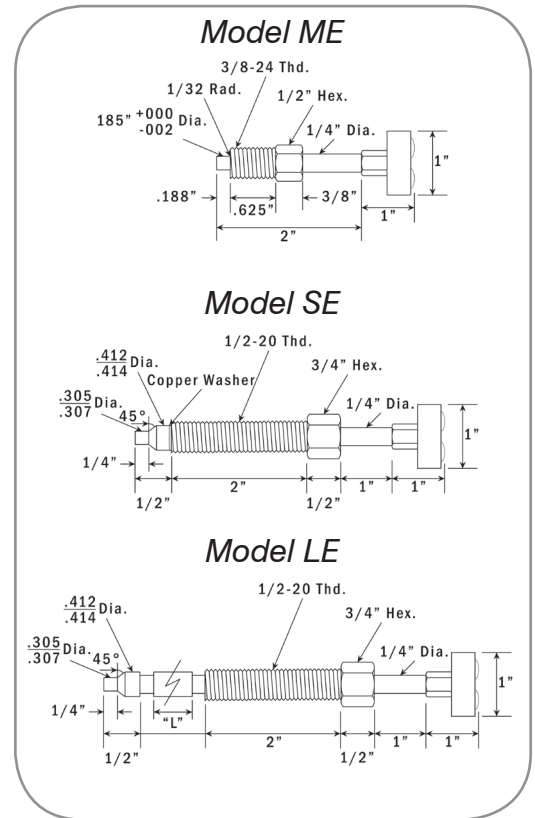
## Extrude-O-Couple Reference C8 Info

The **Extrude-O-Couple** plastic melt temperature sensor utilizes the Nanmac patented Self-Renewing Thermocouple design with an imbedded thermal junction. This proprietary design provides low millisecond response times to temperature changes. Also, the sensing tip is thermally isolated from the thermocouple housing eliminating conduction error. Therefore, the actual (true) temperature of the plastic melt is measured. Click this link for more information in regards to [Selecting the Right Thermocouple](#). All units can be made with various connectors or leads attached, [contact](#) factory with your requirement.

The **C8-ME** model **Extrude-O-Couple** is a one-piece stainless steel unit designed for use in small extruder nozzles. It is installed flush with the inside surface of the nozzle throat. Thus, offering no obstruction to plastic flow. Terminations include various connectors or leads with SS Over-Braid or Flexible Armor conduit. The Nanmac C8-ME model is available in thermocouple calibration types E, J, K, N, or T.

The **C8-SE** model **Extrude-O-Couple** is designed to fit into standard holes existing in most nozzles for thermocouple or pressure gauge applications. This thermocouple has a two-piece stainless steel thermowell which allows for better sealing at the conical surface, automatically self aligning even in slightly offset machined holes. Terminations include various connectors or leads with SS Over-Braid or Flexible Armor conduit. The Nanmac C8-SE model is available in thermocouple calibration types E, J, K, N, or T.

The **C8-LE** model **Extrude-O-Couple** is designed for use on thick-walled extruder nozzles requiring long thermocouples to fit into deep holes. Also it is designed to fit into holes in most nozzles which are modified to receive thermocouples or pressure gauges. The Nanmac C8-LE is a three-piece assembly thermocouple, rotating gland nut and a spacer. The length of the spacer must be specified to accommodate your requirements. Terminations include various connectors or leads with SS Over-Braid or Flexible Armor conduit. The C8-LE model is available in thermocouple types E, J, K, N, or T. When ordering specify model number, calibration, and dimension "L" to the nearest 1/8 inch.



Specifications		
Part No.	Model	Type
C8-1	ME	E
C8-2		J
C8-3		T
C8-4		K
C8-5	SE	E
C8-6		J
C8-7		T
C8-8		K
C8-9	LE	E
C8-10		J
C8-11		T
C8-12		K